

20.64 MWh

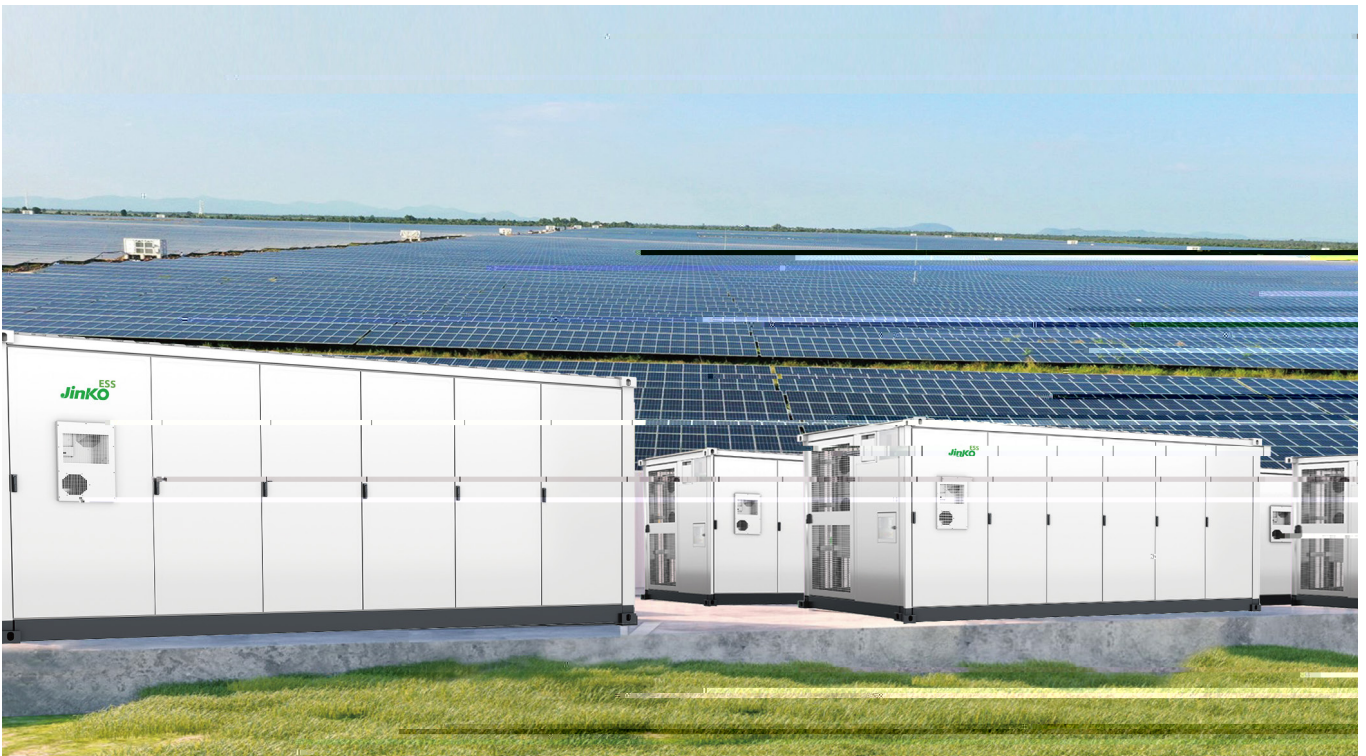
&\$** (

Gi bHYFU

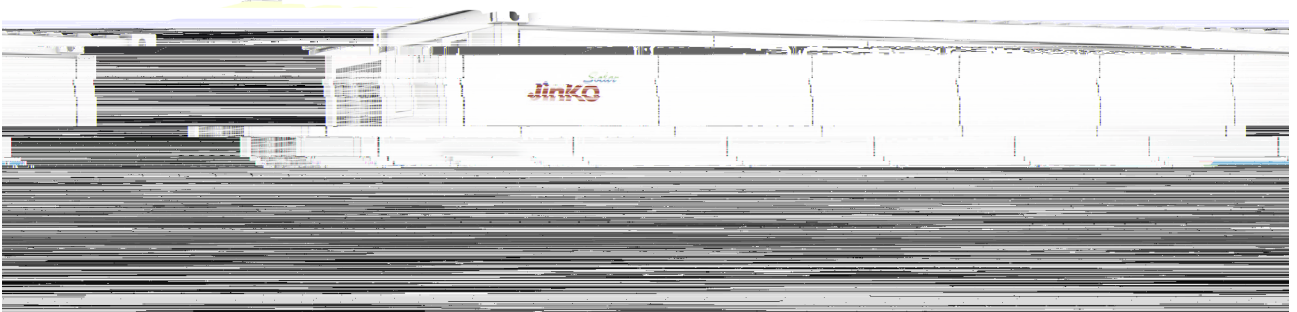
Gi bHYFU

* ' "((

Gi bHYFU



JKE-3440K-2H-LAA



SunTera

280Ah



•

•



•

•

2.5



•

•

1000V /1500V

PCS

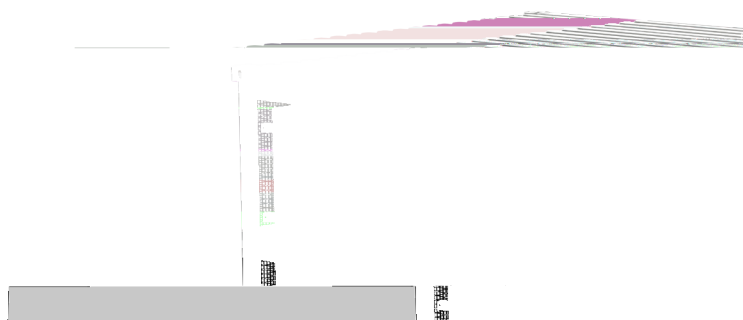


•

•

40

6.88MWh



(LFP)

3.2V/280Ah

0.5P

1P384S×10

3.44 MWh

1228.8V

1075.2~1382.4V

-20~ 50

95%RH,

2000m / < 4000m (,)

80dB(A), @ 1m

IP

IP54

-20~ 45

C3 (EN ISO 12944) / C4 () / C5()

+ + + + +

Ethernet/Fiber ()

(L×W×H)

6058× 2438× 2896mm

35000 kg